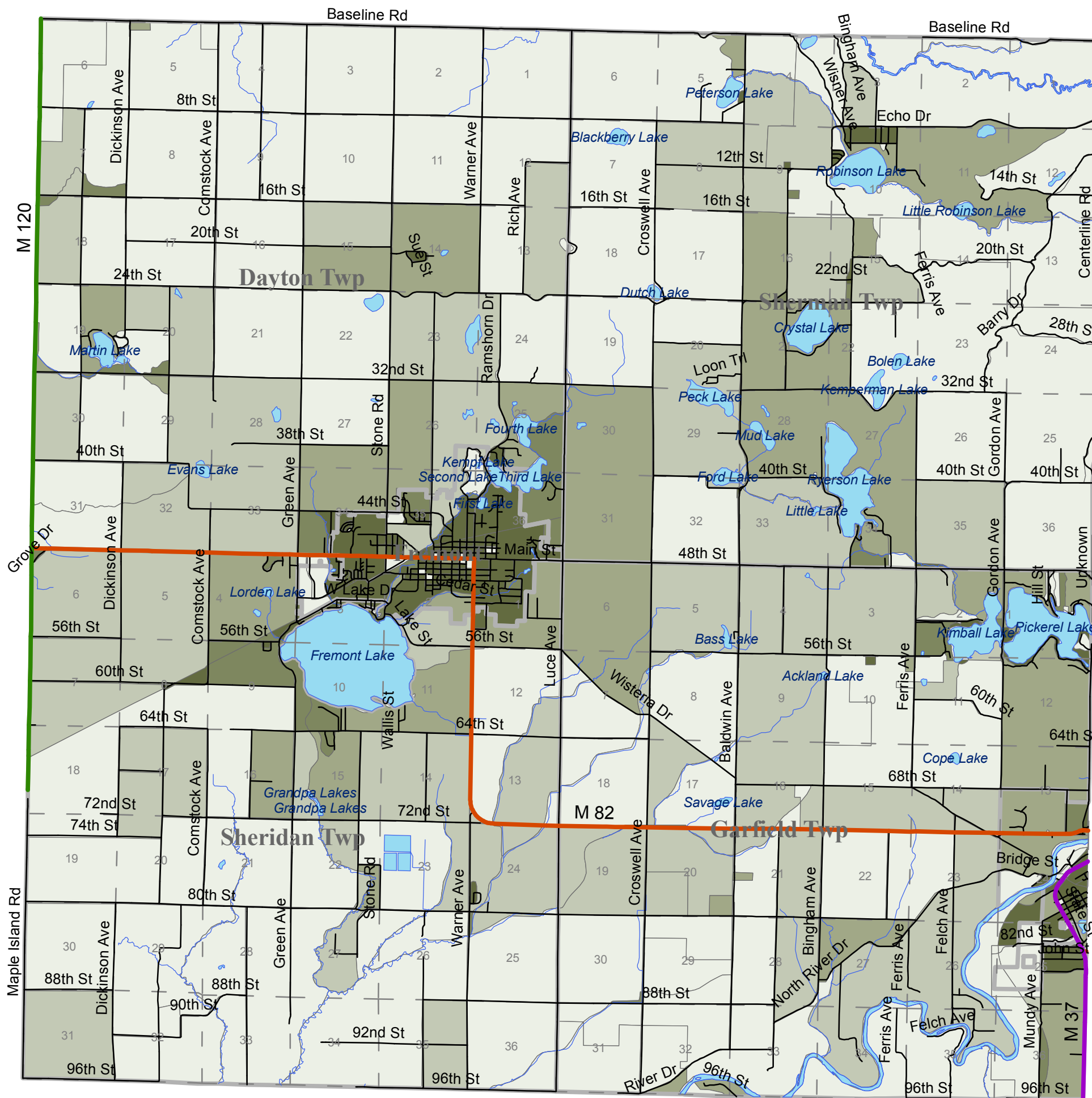


Fremont Area Population Density

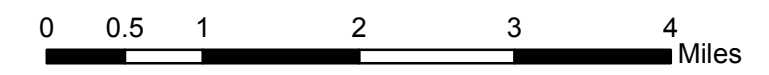


Jurisdiction Boundary
 Lakes
 Streams
 Section Line
 M 120
 M 37
 M 82
 Roads

Population/Square Mile

	0.0 - 50.0
	50.1 - 100.0
	100.1 - 250.0
	250.1 - 500.0
	500.1 - 10975.6

Source:
Michigan Center for Geographic Information,
Department of Information Technology



Map Produced September 2005 by:



Funding Provided by:

